

PULSE LITE

PULSE Lite is a lighter, simpler version of Brüel & Kjær's Windows®-based PULSE Multi-analyzer.

One, two, three clicks and novice and expert alike can start troubleshooting and making valid sound and vibration measurements right away. With its strength in its simplicity, PULSE Lite is especially suitable for those who do not require a system as sophisticated as a full PULSE system.

PULSE Lite is data compatible with PULSE and PULSE Lite systems can be upgraded to fully featured PULSE systems.

A Choice of Three

PULSE Lite comes in three configurations:

1. Basic 2-channel FFT Analyzer-based system (Type 3560 C-L1) (Option 1)
2. Basic 4-channel FFT Analyzer-based system (Type 3560 C-L3) (Option 2)
3. Basic 2-channel CPB Analyzer-based system (Type 3560 C-L5)

Options:

1. 2-channel Run-up/Run-down (Type 7783-N2)
2. 4-channel Run-up/Run-down (Type 7783-N4)



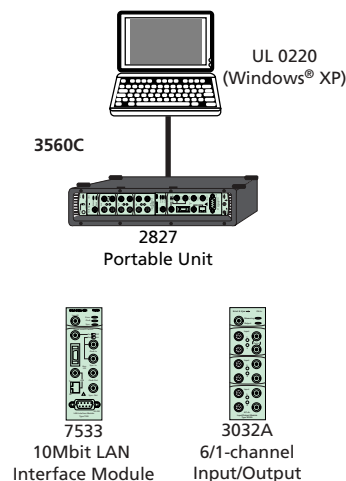
PULSE Labshop Application CD-ROM:

- 7781 PULSE Lite Basic FFT
- 7782 PULSE Lite Basic CPB
- 7783 PULSE Lite Run-up/Run down analysis



Pulse Knowledge Library CD-ROM including PULSE Lite video:

- Introduction to hardware
- Introduction to software
- Impact testing
- Run-up measurement
- Chainsaw noise measurement
- Power plant noise measurements
- Product Testing using CPB analysis
- Calibration



020225

PULSE LITE SYSTEMS WITHOUT PC

- 3560 C-L2** Similar to 3560 C-L1 but without Laptop PC UL 0220
- 3560 C-L4** Similar to 3560 C-L3 but without Laptop PC UL 0220
- 3560 C-L6** Similar to 3560 C-L5 but without Laptop PC UL 0220

SOFTWARE UPGRADE TO FULL PULSE

- UA 1628** Upgrade from PULSE Lite 4-channel to PULSE 7700-N4
- UA 1629** Upgrade from PULSE Lite 2-channel to PULSE 7700-N2

- UL 0208-xx** Microsoft® Office XP Small Business Edition
- UL 0209-xx** Microsoft® Office XP Standard Edition with Manuals
- UL 0207-xx** Microsoft® Office XP Professional Edition

xx specifies country code
See Page 10

TYPE 3560 C-L1

PULSE Lite Basic 2 ch. FFT Analyzer

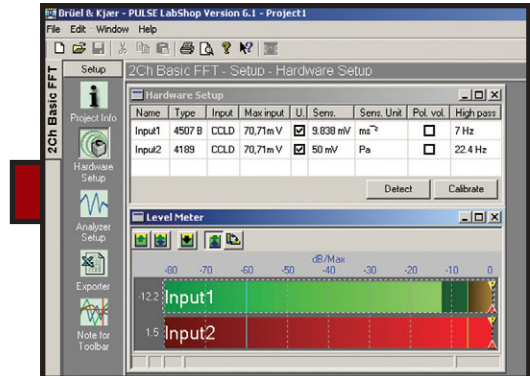
3560 C
2827
7533
3032 A
7781-N2
UL 0220
Windows® XP

- Basic 2-channel vibration analyzer
- Simple vibration analysis
- Impact testing for resonance analysis
- Transient analysis of non-stationary signals
- Export to PULSE ASCII, UFF or Microsoft® Excel
- Including Laptop PC and PULSE Lite Software Maintenance and Support Agreement



* One year SW maintenance

It is very easy to set up the hardware. Just connect your TEDS transducers and click the "detect" button. Use the level meter to autorange your signal levels automatically or monitor any overloads

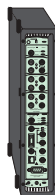


TYPE 3560 C-L3

PULSE Lite Basic 4 ch. FFT Analyzer

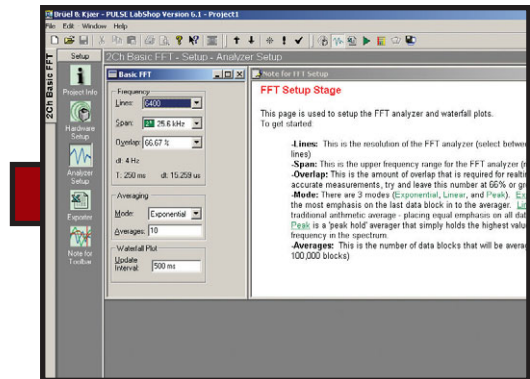
3560 C
2827
7533
3032 A
7781-N4
UL 0220
Windows® XP

- Basic 4-channel vibration analyzer
- Simple vibration analysis
- Impact testing for resonance analysis
- Transient analysis of non-stationary signals
- Export to PULSE ASCII, UFF or Microsoft® Excel
- Including Laptop PC and PULSE Lite Software Maintenance and Support Agreement



* One year SW maintenance

Use the Setup task bar to set up your hardware and analysis. A Note for FFT setup will guide you in setting up your FFT analyzer – number of lines, frequency span, overlap, averaging mode, etc.

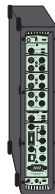


TYPE 3560 C-L5

PULSE Lite Basic 2 ch. CPB Analyzer

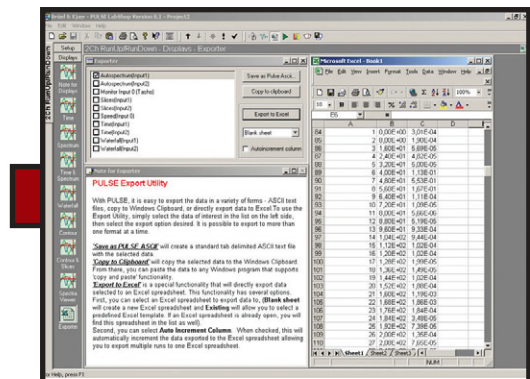
3560 C
2827
7533
3032 A
7782-N2
UL 0220
Windows® XP

- Basic 2-channel acoustic analyzer
- CPB analysis (1/1-octave, 1/3-octave)
- Product noise evaluation
- Transient analysis of non-stationary signals
- Export to PULSE ASCII, UFF or Microsoft® Excel
- Including Laptop PC and PULSE Lite Software Maintenance and Support Agreement



* One year SW maintenance

PULSE Lite includes direct export to Microsoft® Excel. Just select the data you want to export and click the "Export to Excel" button. You can also export in Universal File Format (UFF) or PULSE ASCII



OPTIONAL

Options for PULSE Lite Systems

7783-N2
7783-N4

Run-up/Run-down analysis on rotating machinery:

- 2-channel option for 3560 C-L1
- 4-channel option for 3560 C-L3

3560 C-L2

- Similar to 3560 C-L1 but without Laptop PC

3560 C-L4

- Similar to 3560 C-L3 but without Laptop PC

3560 C-L6

- Similar to 3560 C-L5 but without Laptop PC

Run-up/Run-down analysis uses Waterfall and Contour plots with a harmonic cursor. The RPM meter indicates the actual Speed, the Run-up range is marked in Green

